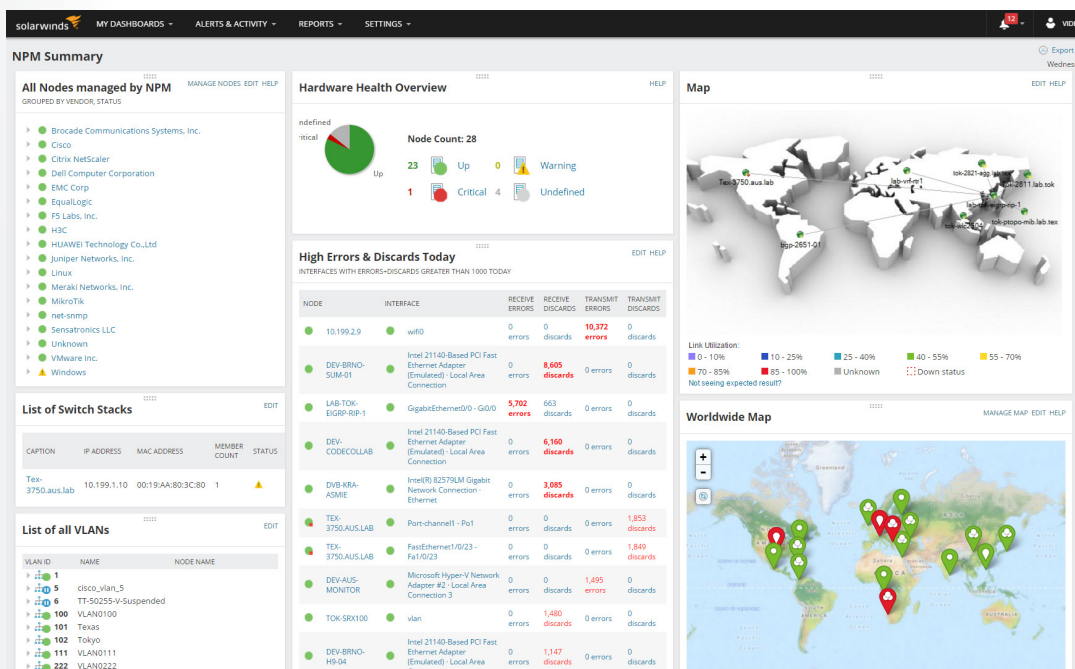




# SOLARWINDS NETWORK PERFORMANCE MONITOR



**DOWNLOAD FREE TRIAL**  
Fully Functional for 30 Days

*Fault, Availability, Performance, and Deep Packet Inspection*

**SolarWinds® Network Performance Monitor (NPM)** is a powerful and affordable network monitoring software that enables you to quickly detect, diagnose, and resolve network performance problems and outages.

## NETWORK PERFORMANCE MONITOR AT A GLANCE

- » Speeds troubleshooting, increases service levels, and reduces downtime.
- » Advanced network troubleshooting for on-premises, hybrid, and cloud services with critical path hop-by-hop analysis.
- » **New in v12.1:** Cross-stack network data correlation for acceleration of problem identification.
- » Monitors and displays response time, availability, and performance of network devices.
- » Improves operational efficiency with out-of-the-box dashboards, alerts, and reports.
- » Automatically discovers network devices and typically deploys in about an hour.

## FEATURES

### **Fault, performance, and availability monitoring**

Quickly detect, diagnose, and resolve network performance issues and avoid downtime with network optimization software.

### **Hop-by-hop analysis along critical paths**

View performance, traffic, and configuration details of devices and applications that are on-premises, in the cloud, or across hybrid environments with NetPath™.

### **Cross-stack network data correlation**

Accelerate identification of root cause by dragging-and-dropping network performance metrics on a common time line for immediate visual correlation across all of your network data.

### **Customizable topology and dependency-aware intelligent alerts**

Respond to multiple condition checks, correlated events, network topology, and device dependencies.

### **Dynamic wired and wireless network discovery and mapping**

Automatically discover and map devices, performance metrics, link utilization, and wireless coverage.

### **Automated capacity forecasting, alerting, and reporting**

Automatically calculate exhaustion dates using customizable thresholds based on peak and average usage.

### **Comprehensive monitoring of F5 BIG-IP family of products**

Visualize and gain insight into the health and performance of your F5 service delivery environment.

### **Wireless network monitoring and management**

Retrieve performance metrics for autonomous access points, wireless controllers, and clients.

### **Consultant and services-free deployment**

Install and deploy in generally as little as an hour, with out-of-the-box monitors, alerts and reports.

### **Customizable single-pane-of-glass network monitoring software**

Customizable web-based network performance dashboards, views, and charts.

### **End-user quality of experience with Packet Capture and Analysis**

Determine if changes in end-user experience are caused by the application or the network.



Fully Functional for 30 Days

### Dynamic statistical network performance baselines

Dynamically calculate baseline thresholds from historical network performance data.

### Hardware Health Monitoring


Monitor, alert, and report on key device metrics, including temperature, fan speed, and power supply.

### Customizable performance and availability reports

Schedule and generate custom network performance reports with one of over 100 out-of-the-box templates.

### Drag-and-discover network performance charts

Real-time network performance metrics with interactive charts and graphs from your network devices.


DOWNLOAD FREE TRIAL

Fully Functional for 30 Days

## SYSTEM REQUIREMENTS

| HARDWARE       | MINIMUM REQUIREMENTS   |
|----------------|--|
| CPU            | Dual processor, 3.0 GHz  |
| Memory         | 3 GB   |
| Hard Drive     | 20 GB free disk space is recommended   |
| SOFTWARE       | MINIMUM REQUIREMENTS   |
| OS             | Windows Server 2008 R2 SP1<br>Windows Server 2012<br>Windows Server 2012 R2  |
| Database       | SolarWinds supports Express, Standard, or Enterprise versions of the following:<br>-SQL Server 2008, 2008 SP1, 2008 SP2, 2008 SP3, 2008 SP4<br>-SQL Server 2008 R2, 2008 R2 SP1, 2008 R2 SP3<br>-SQL Server 2012, 2012 SP1, 2012 SP2, 2012 SP3<br>-SQL Server 2014, 2014 SP1<br>-SQL Server 2016 |
| .NET Framework | Version 4.5 Required   |

NOTE: The minimum server requirements listed assume default configuration. Significantly increasing the poll rate or statistic collection rate could result in additional load on the server, which may require a larger CPU or additional memory.

## TRY BEFORE YOU BUY. DOWNLOAD A FREE TRIAL!

Don't just take our word for it. At SolarWinds, we believe you should try our software before you buy. That's why we offer free trials that deliver full product functionality. Simply download and install the software and take a break while Network Performance Monitor discovers your network devices. When you get back, your monitoring environment will be waiting for you—complete with out-of-the-box dashboards, alerts, reports, and more. It's just that simple!



## ABOUT SOLARWINDS

SolarWinds provides powerful and affordable IT management software to customers worldwide, from Fortune 500® enterprises to small businesses, managed service providers (MSPs), government agencies, and educational institutions. We are committed to focusing exclusively on IT, MSP, and DevOps professionals, and strive to eliminate the complexity that our customers have been forced to accept from traditional enterprise software vendors. Regardless of where the IT asset or user sits, SolarWinds delivers products that are easy to find, buy, use, maintain, and scale while providing the power to address key areas of the infrastructure from on-premises to the cloud. This focus and commitment to excellence in end-to-end hybrid IT performance management has established SolarWinds as the worldwide leader in both network management software and MSP solutions, and is driving similar growth across the full spectrum of IT management software. Our solutions are rooted in our deep connection to our user base, which interacts in our [THWACK®](#) online community to solve problems, share technology and best practices, and directly participate in our product development process. Learn more today at [www.solarwinds.com](http://www.solarwinds.com).

## LEARN MORE

Learn more at <http://www.solarwinds.com>.

For product information about SolarWinds products, visit [solarwinds.com](http://solarwinds.com), call, or email:  
7171 Southwest Parkway | Building 400 | Austin, Texas 78735

### AMERICAS

Phone: 866.530.8100  
Fax: 512.682.9301  
E-mail: [sales@solarwinds.com](mailto:sales@solarwinds.com)

### EMEA

Phone: +353 21 5002900  
Fax: +353 212 380 232  
E-mail: [sales@solarwinds.com](mailto:sales@solarwinds.com)

### ASIA

Phone: +65 6593 7600  
Fax: +65 6593 7601  
E-mail: [apacsales@solarwinds.com](mailto:apacsales@solarwinds.com)

### PACIFIC

Phone: +61 2 8412 4910  
E-mail: [apacsales@solarwinds.com](mailto:apacsales@solarwinds.com)



For additional information, please contact SolarWinds at 866.530.8100 or email [sales@solarwinds.com](mailto:sales@solarwinds.com).  
To locate an international reseller near you, visit [http://www.solarwinds.com/partners/reseller\\_locator.aspx](http://www.solarwinds.com/partners/reseller_locator.aspx)