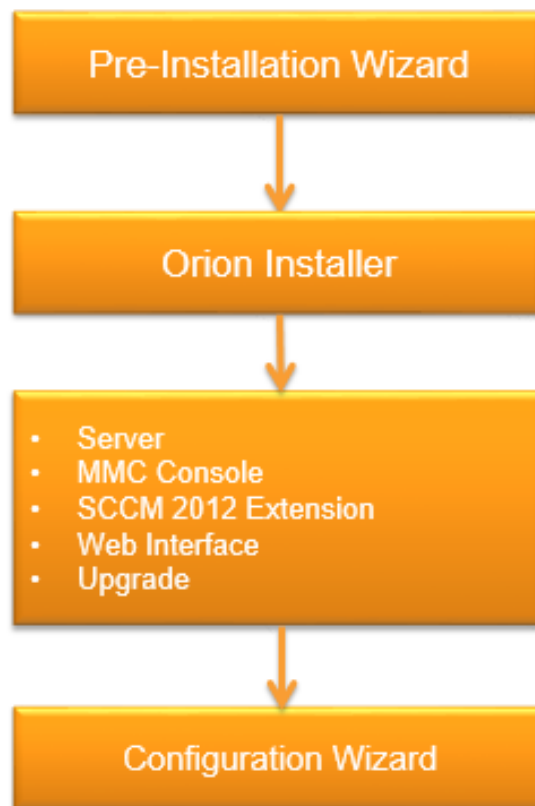


How to Install and Configure Patch Manager 2.0?

Patch management is one of the key system maintenance activities that IT admins are responsible for. This is an ongoing task because any device connected to your network could be a potential threat if it is vulnerable. Vulnerabilities can lead to dreadful security issues like data theft, non-availability and many more. The more you fail to keep up with security updates from your software vendors, the more you are prone to vulnerability. This calls for a centralized patch management system like SolarWinds Patch Manager which can make it easy for administrators to ensure that their systems are running the latest version and are free from vulnerabilities.

Deployment made easy with SolarWinds Patch Manager 2.0

Traditionally, deploying patch management tools has been a tedious process even to the most experienced administrator. Patch Manager 2.0 aims to reduce the installation and configuration hassles. Here's the simplified installation flow with the new version.

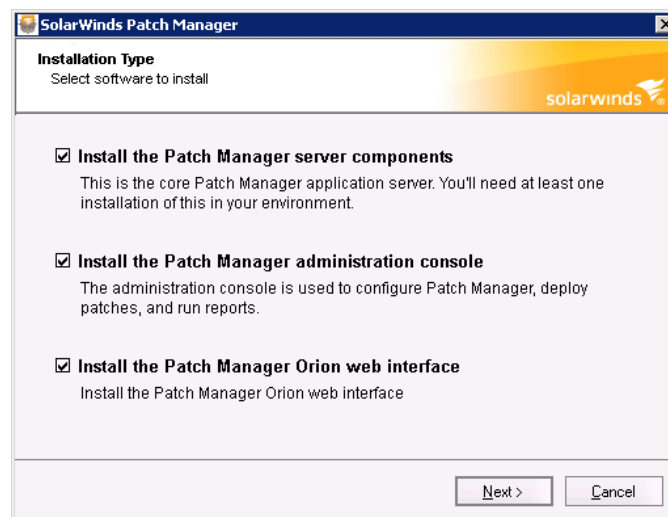


Installing SolarWinds Patch Manager

With Patch Manager 2.0, installation is just a few simple steps. It is now integrated with the Orion Installer, which means a single, express installer and shared pre-requisites between all Orion platform products.

Pre-Installation Wizard

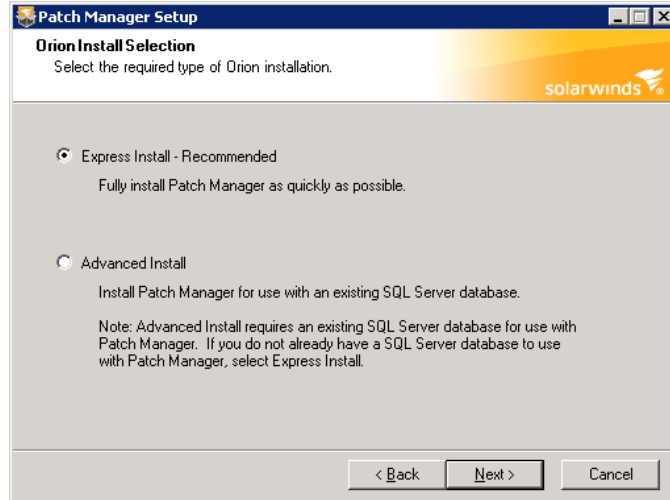
- Guides you through the pre-requisites for setting up and deploying Patch Manager
- Allows you to choose installed components, detects the limitations of your system and offers upgrades. All you need to do is select the components that are not already installed



Orion integrated installer

Patch Manager plugs into our regular Orion installer and provides an express (automatic) or advanced (manual configuration) option to install and upgrade essential components.

- The Express Installer option requires minimal user input— it automatically installs a WSUS server and SQL express



Configuration and first time use wizard

- Walks you through configuring your SolarWinds Orion and Patch Manager installation
- Helps you setup your database, website, server role, WSUS server, credentials, etc.
- Guides the you through solving configuration issues
- Publishes all update metadata from our evaluation catalog on WSUS server(s)
- Runs scans on selected clients to determine update applicability

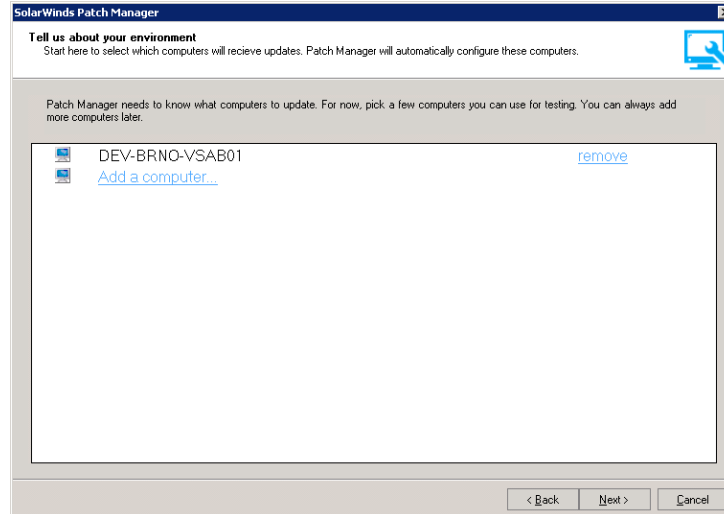
It's a two phase process:

- Configuration
- Patch deployment

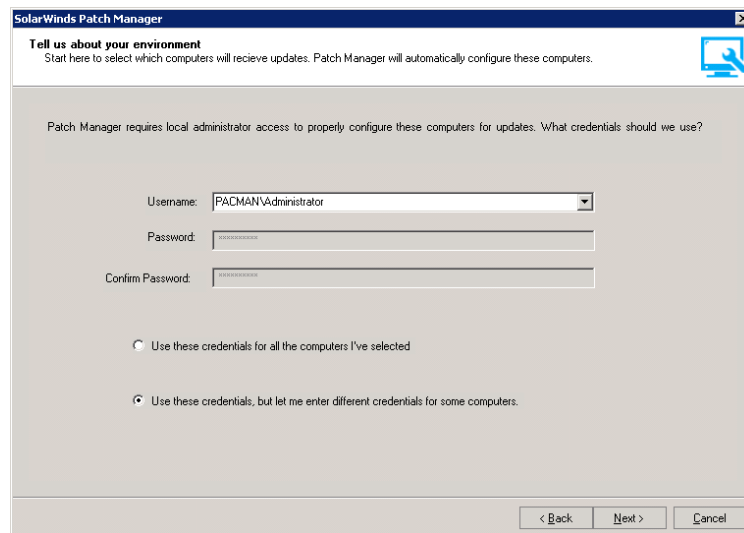


Configuration phase:

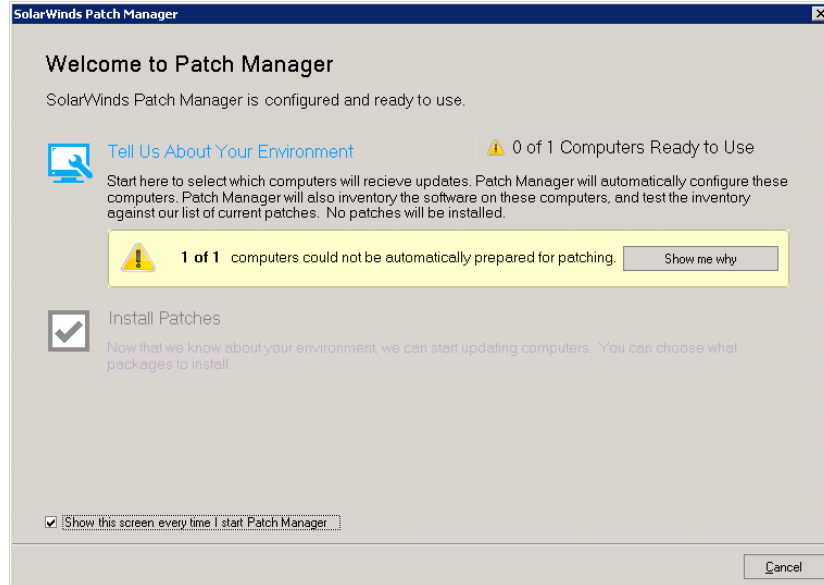
In the configuration phase, you can configure selected clients for which you would like to test the patch update.



At this point, you can either use one credential or multiple credentials for the process. Patch Manager uses WMI providers to receive 3rd party updates from your local WSUS server.



If the configuration process cannot continue, exceptions are displayed for the user. Common errors also include solutions.

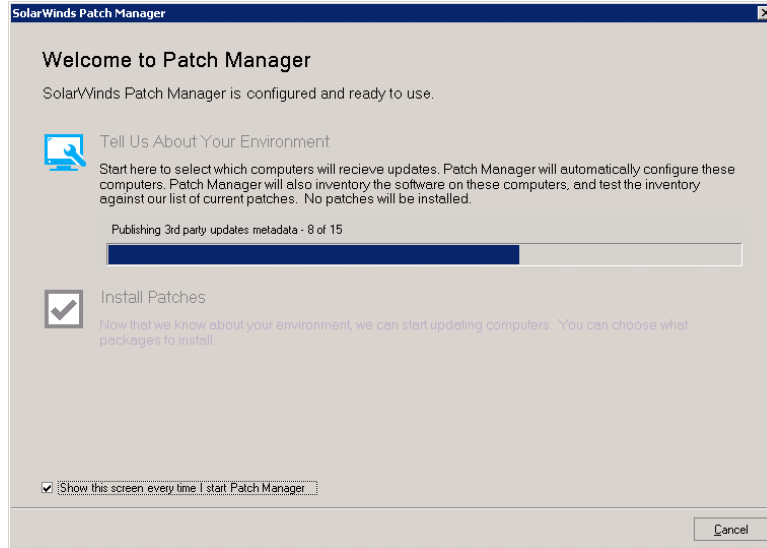


Here are some of the most common configuration exception types:

Exception Type	Description	Solution
Unknown failure	Unable to configure clients for unknown reasons.	No solution provided
No WSUS assigned	Unable to push updates to clients that are not using WSUS server.	Choose a (or add new) WSUS server for client to the system
No WSUS server available	No WSUS server detected.	Add a WSUS server to the system
WSUS server used by client(s) is not managed	Cannot access the WSUS server used by clients because it is not managed.	Add the WSUS server to the system
3rd party updates not enabled on client using group policy	Client(s) are not configured to receive 3rd party updates and are using group policy.	View the linked KB article
Unable to connect the client(s)	Clients are not reachable.	View the linked KB article
Access Denied	Access is denied with the given	Re-enter your credentials

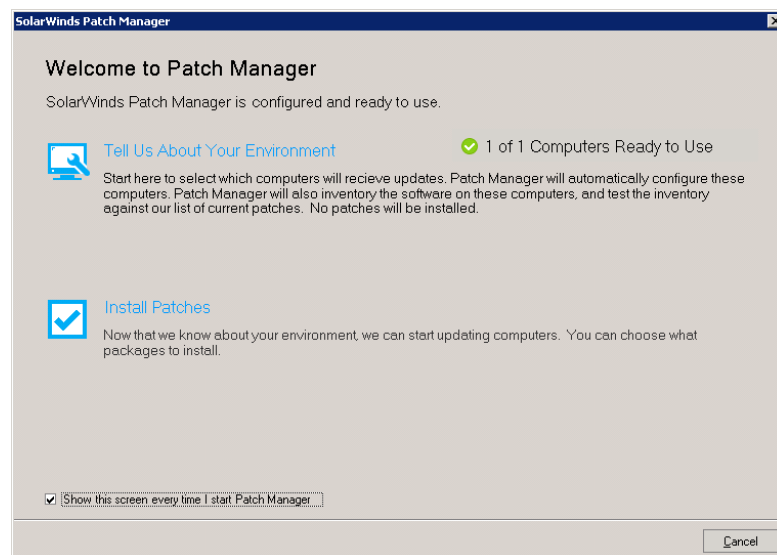
	credentials.	
Client is unable to contact WSUS server	The WSUS server specified by the user cannot be resolved or contacted from the client computer.	View the linked KB article
Unable to contact discovered WSUS	Patch Manager is unable to work with the discovered WSUS. Either it cannot be resolved or it cannot be reached.	Reconfigure your network
Unable to get the device information	Patch Manager cannot resolve missing client information (hostname, netbios, IP, canonical name, or domain).	Reconfigure your network
Unable to get WSUS IP	The specified or discovered WSUS server's DNS cannot be resolved.	Reconfigure your network
WSUS is downstream server	The targeted WSUS server is a downstream server. Patch Manager can only publish to the top most upstream server in the hierarchy.	Reconfigure the WSUS server's assignment
Missing WSUS registry permissions	Patch Manager cannot work with the WSUS server because the Read permission of the local Users group is missing for registry key.	Reconfigure the WSUS registry

When clients are configured, metadata for all updates in the Evaluation catalog are published on WSUS servers in use.

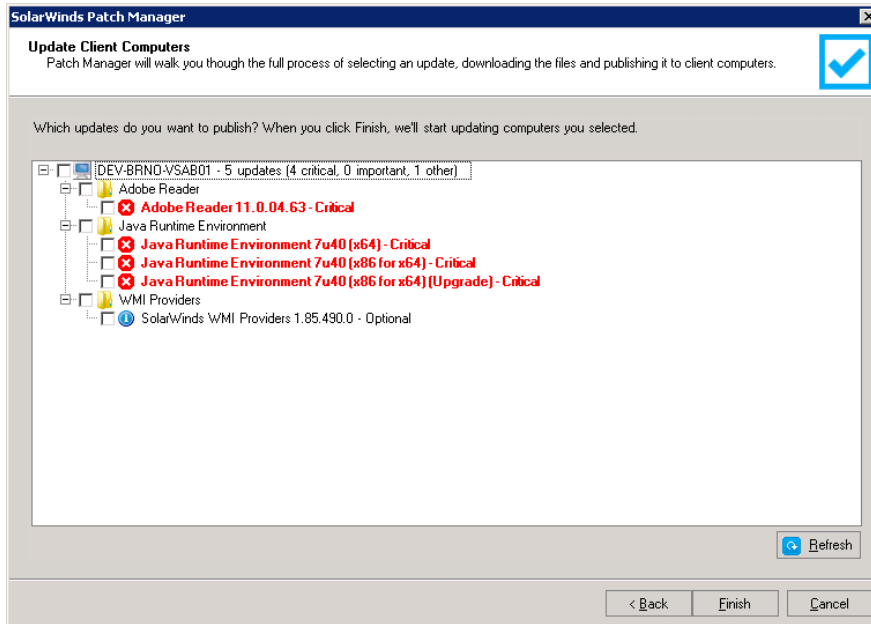


Patching phase:

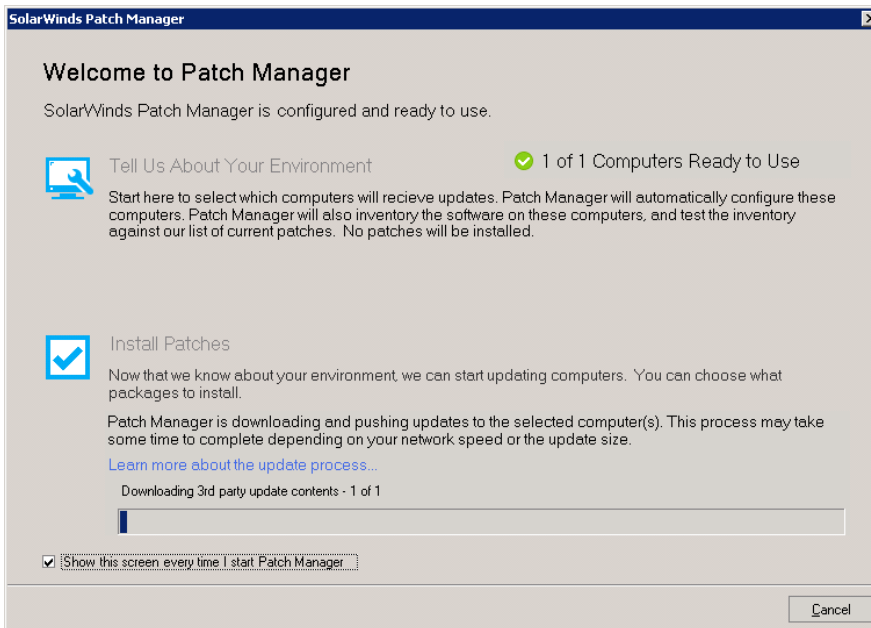
When the configuration phase is complete, the you are prompted to continue by selecting the patches for installation.



Then the applicable patches are detected, which is then downloaded by the wizard and published to the WSUS servers.



You can select the computers to which the patches need to be applied, and the patching begins.



With [SolarWinds Patch Manager](#), you can easily discover systems that are not running the latest updates, and you can patch them accordingly. Once you deploy the update, you can run reports to check how successful your patching was and if there still any vulnerable computers and applications on the network.

Patch Manager extends the power of Microsoft® SCCM and WSUS to help you keep your desktops, laptops, and servers patched and secure with the latest patches for both Microsoft and other third-party applications. It also provides you with pre-built, tested, and ready-to-deploy patches for common, 3rd-party applications. You can also customize patch reports, schedule, and email them, thus reducing weeks of your patching efforts and helping you protect your software and applications against vulnerabilities.

[LEARN MORE »](#)[DOWNLOAD FREE TRIAL](#)

References

- [WSUS Diagnostics issues solved](#)
- [Top 10 Diagnostics Tips for Client Troubleshooting with SCCM](#)

About SolarWinds

[SolarWinds](#) (NYSE: SWI) provides powerful and affordable IT management software to customers worldwide. Focused exclusively on IT Pros, we strive to eliminate the complexity in IT management software that many have been forced to accept from traditional enterprise software vendors. SolarWinds delivers on this commitment with unexpected simplicity through products that are easy to find, buy, use, and maintain, while providing the power to address any IT management problem on any scale. Our solutions are rooted in our deep connection to our user base, which interacts in our online community, [thwack](#), to solve problems, share technology and best practices, and directly participate in our product development process. Learn more at <http://www.solarwinds.com>.

